

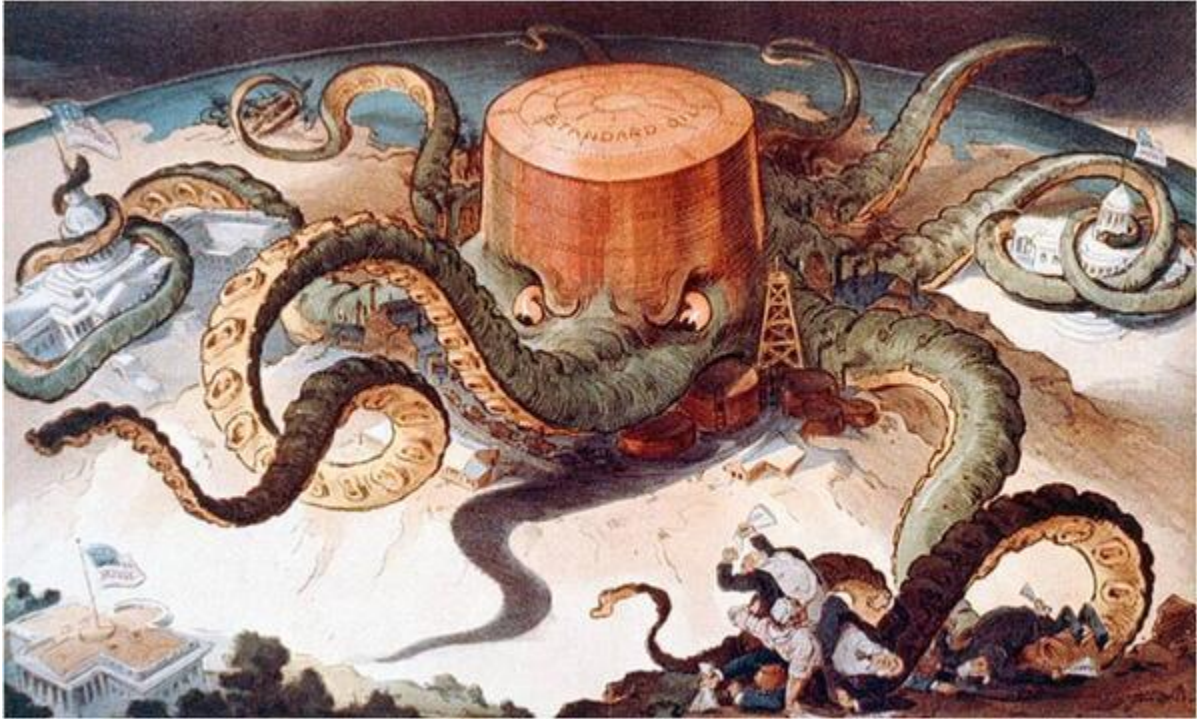
His 106: Alternative Assessment

Instructions: Provide a one-to-three sentence analysis of each Gilded Age or Progressive Era Cartoon (#1 through #8). Submit your analyses on a separate file, via email to gwesthoff@mercy.edu

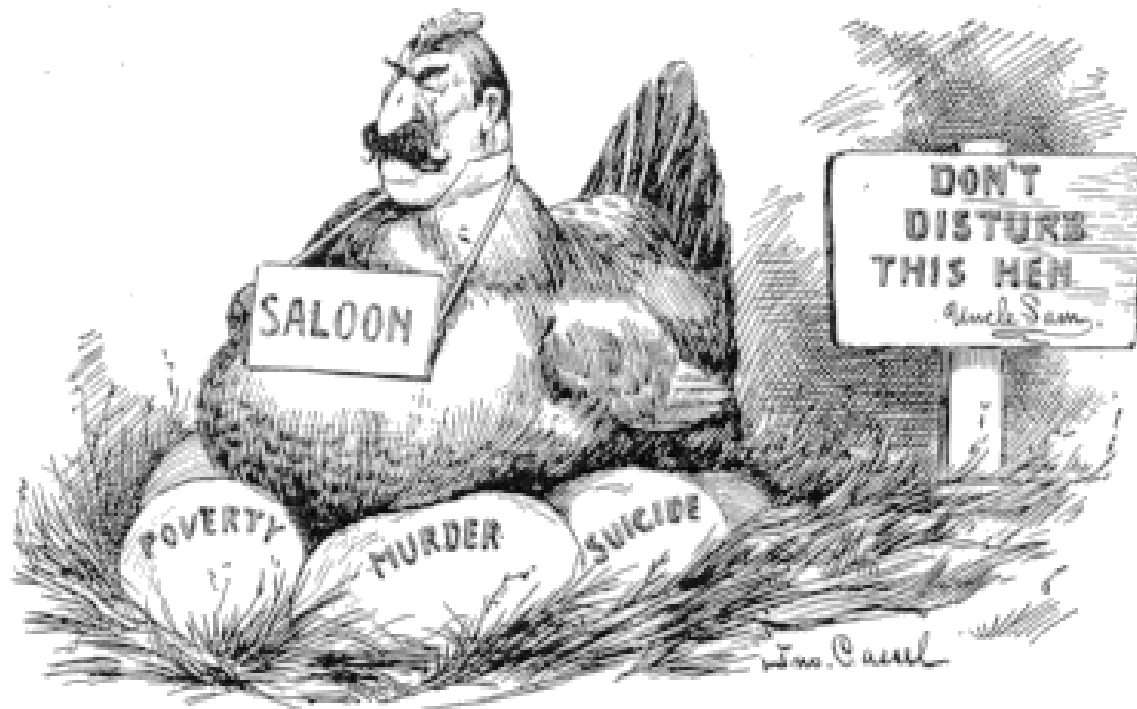
Document One



Document Two



Document Three



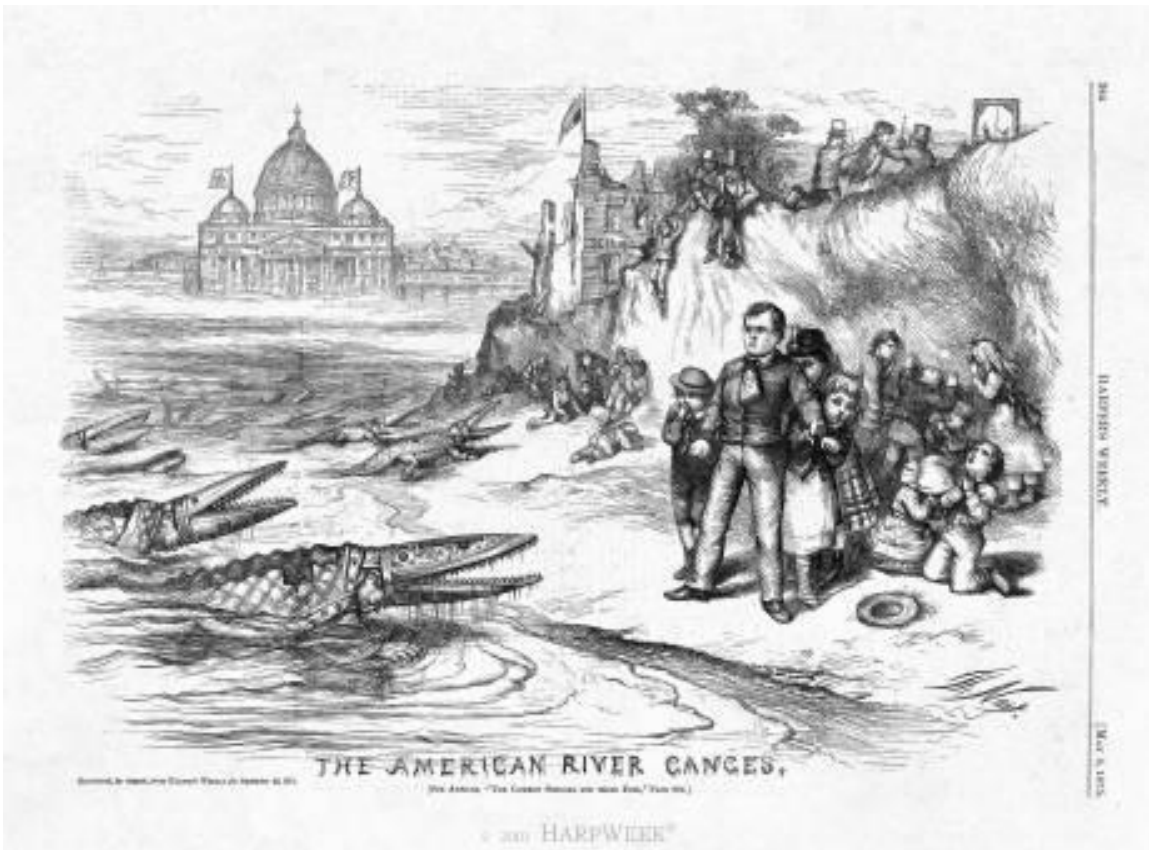
HATCHING A BROOD.

Document Four



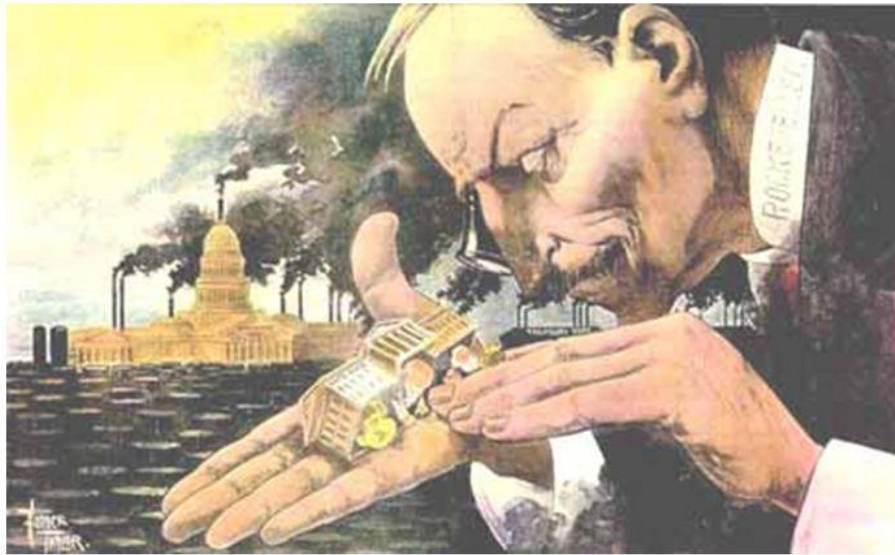
UNCLE SAM: "I wonder how much longer that fellow can stand it!"—From the *Journal* (Detroit).

Document Five



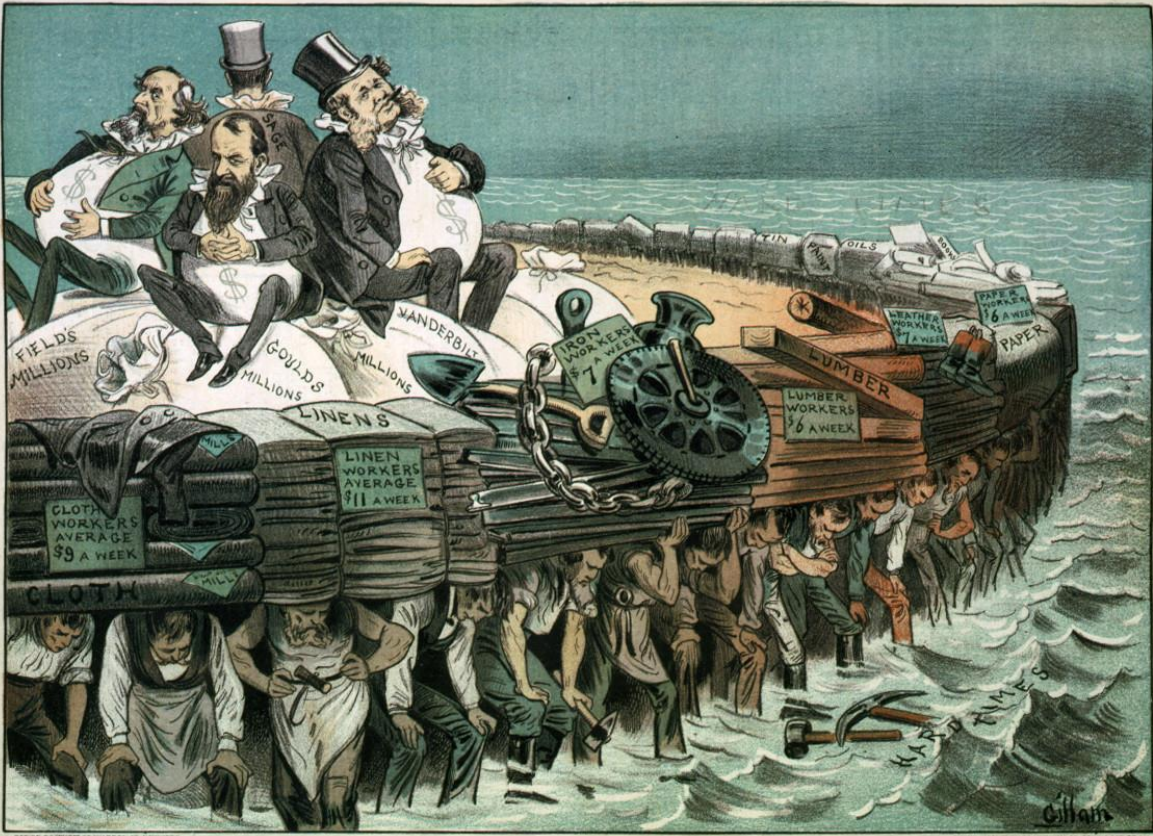
Document Six

“What a funny little government”



Document Seven

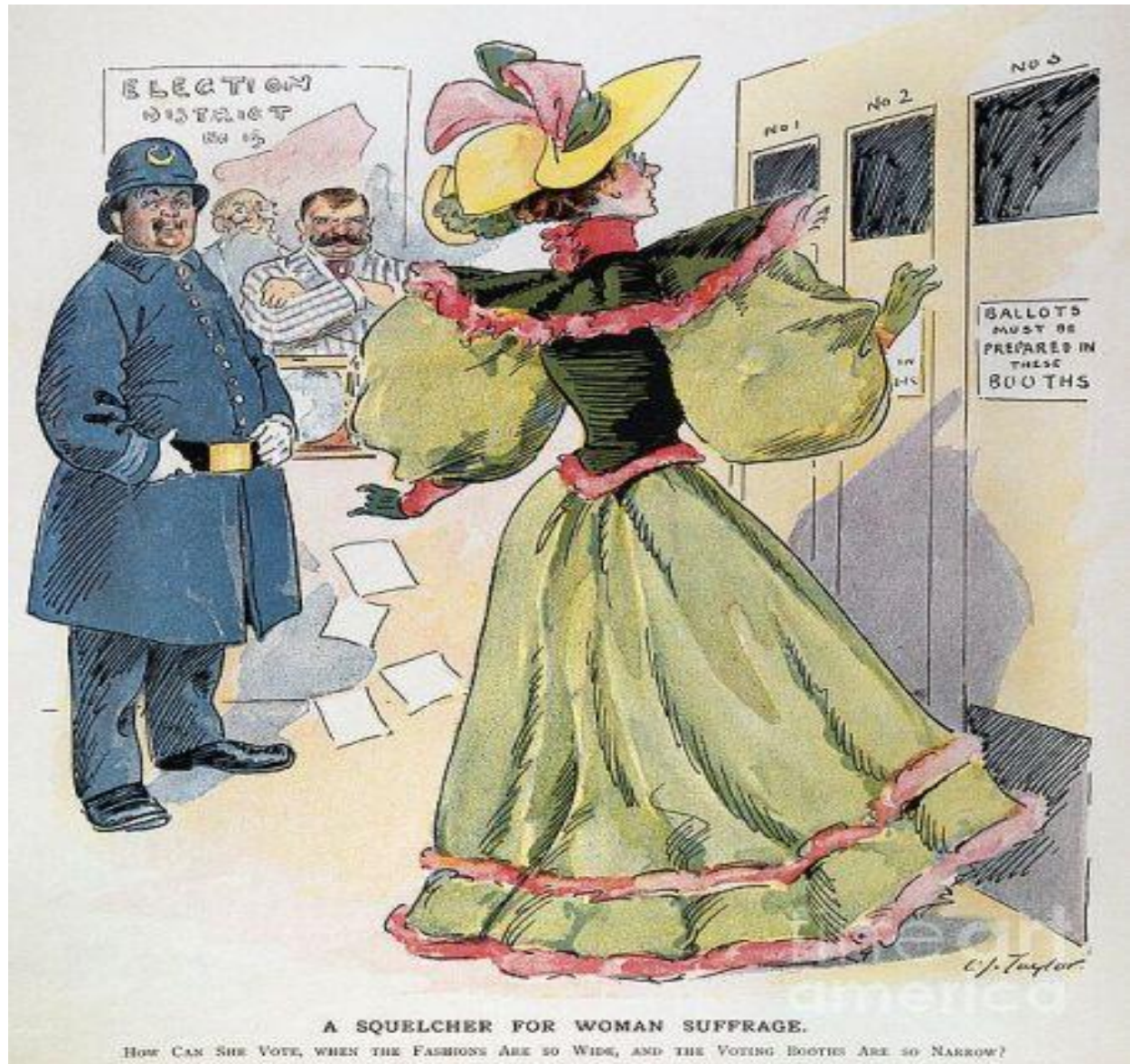
P U C K .



THE PROTECTORS OF OUR INDUSTRIES.

Gilman

Document Eight



A SQUELCHER FOR WOMAN SUFFRAGE.

HOW CAN SHE VOTE, WHEN THE FASHIONS ARE SO WIDE, AND THE VOTING BOOTHS ARE SO NARROW?